

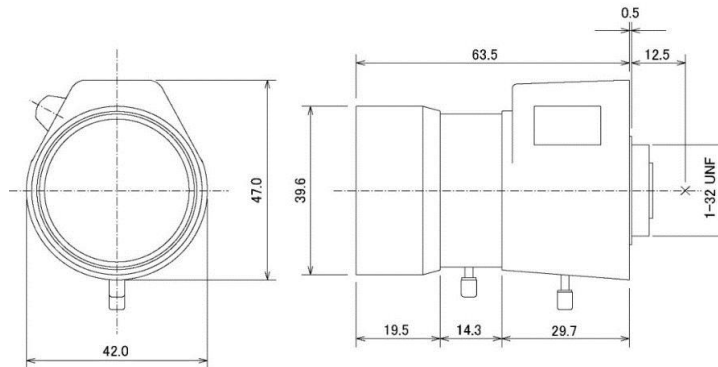
KVM0750PIR
7-50mm F1.6

IR
3 Mega
P-iris

- * P iris
- * IR corrected (Day & Night)
- * 3 Megapixel
- * CS mount for 1/2.7 & 1/3 inch
- * Aspherical



Model Name	KVM0750PIR	
Image Sensor	1/2.7 & 1/3 inch	
Focal Length	7-50mm	
Aperture Range	F1.6-Close	
M.O.D.	0.2m	
Angle of View	1/2.7 inch	Wide 50.5° (D) x 41.3° (H) x 31.6° (V) Tele 7.5° (D) x 6.5° (H) x 3.7° (V)
	1/3 inch	Wide 48.4° (D) x 37.8° (H) x 28.8° (V) Tele 6.9° (D) x 5.5° (H) x 4.1° (V)
Mount	CS mount	
Dimensions	Φ 39.6 x 47.0(H) x 64.0(L)mm	
Weight	125g	
Iris	P-iris	
Focus	Manual	
Zoom	Manual	



Exciting Pattern

Pin No.	Step Phase	Close →		← Open	
		1	2	3	4
1	A	H	L	L	H
2	\bar{A}	L	H	H	L
3	B	H	H	L	L
4	\bar{B}	L	L	H	H

